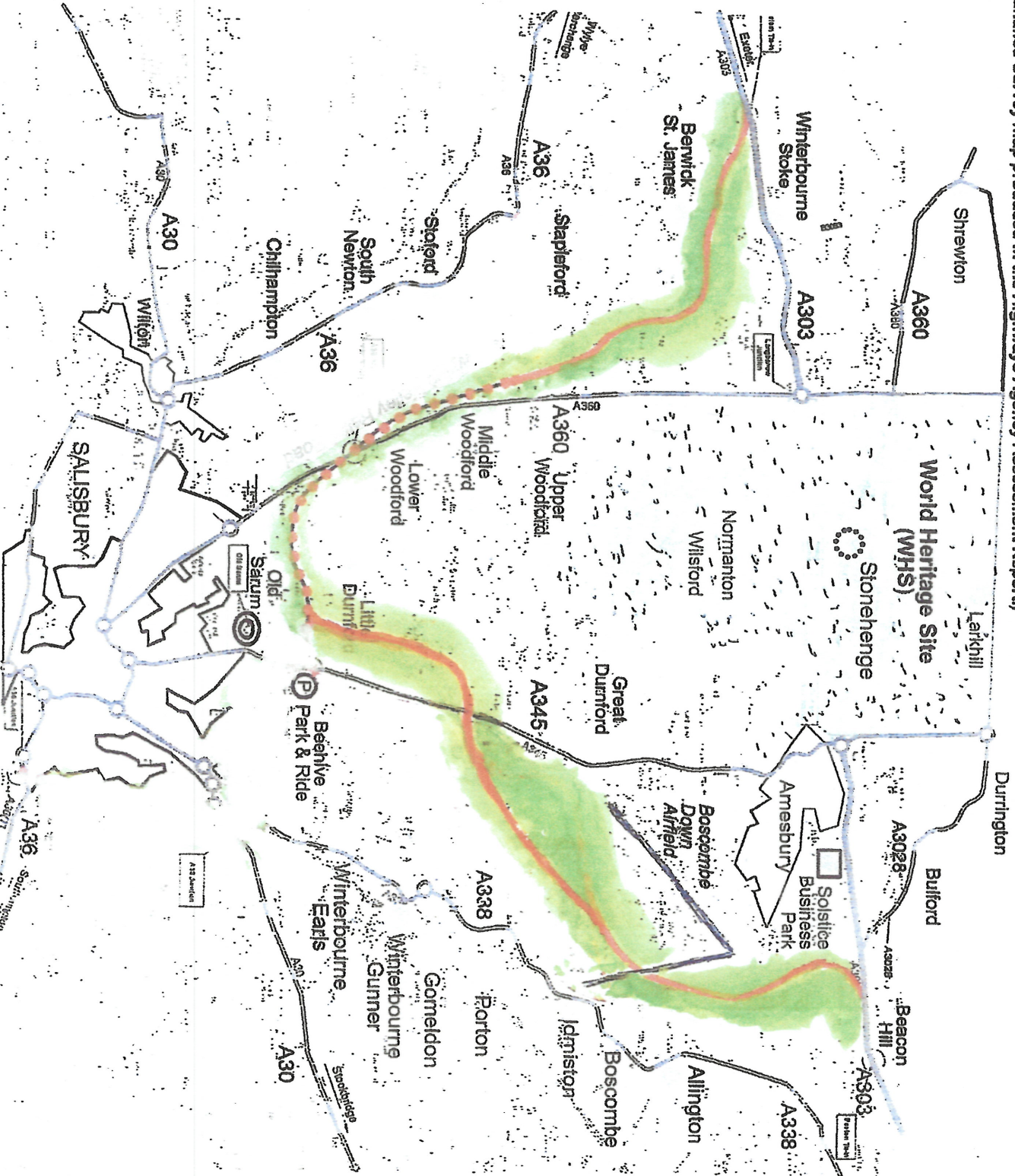
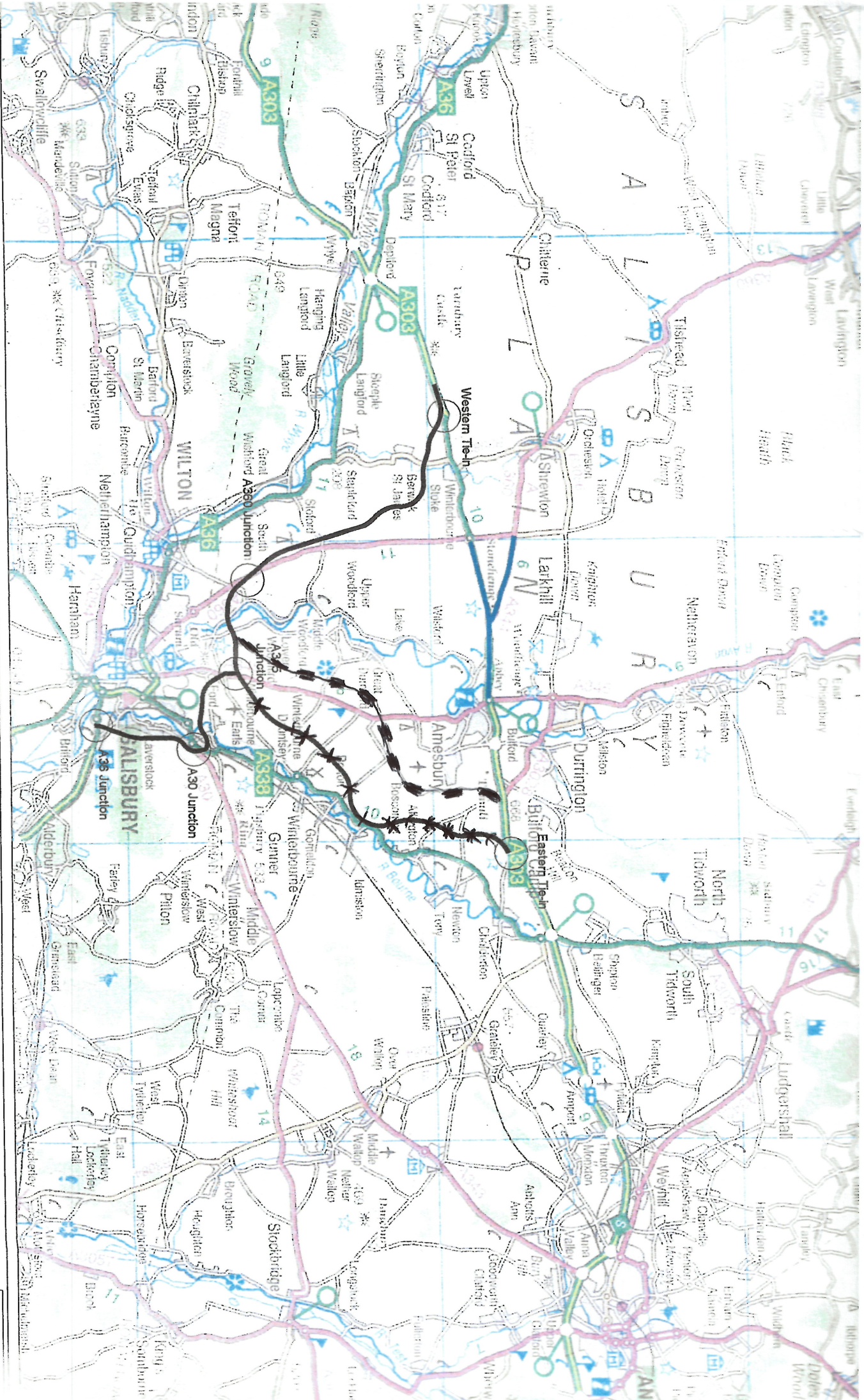


The A303 Realignment Plan
 (Based on the Ordnance Survey map produced in the Highways Agency Assessment Report.)



A303 Realignment Plan





○ Junction
 Roads to be Removed and Returned To Agriculture

NEW A303 LINK
 OLD A303 LINK

A303 Stonehenge Parkway
 Existing and I

Not To Scale